

# Launca DL-300 Wireless Intraoral Scanner

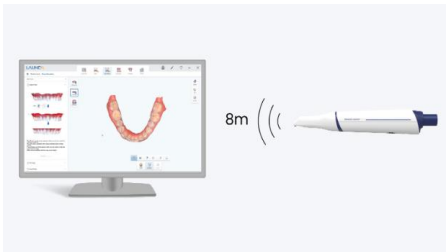
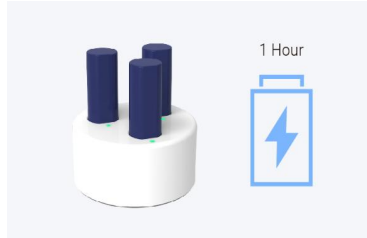


## Fast & Accurate Wireless Scanning

DL-300 Wireless adopts cutting-edge wireless data transmission technology, allowing you to scan quickly and stably from any angle.

## Outstanding Battery Performance

With up to 1 hour of continuous scanning on a single charge, you can enjoy uninterrupted and smooth scanning.



## Up to 8m Wireless Range

No wires to hold you back! Enjoy the freedom of wireless movement between rooms with a range of up to 8 meters.

## New Software with Advanced Features

The brand-new software UI with built-in tutorials helps you get started quickly and easily.

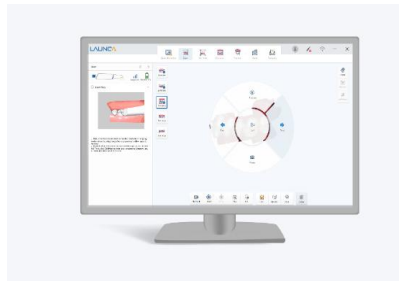


## Calibration Free

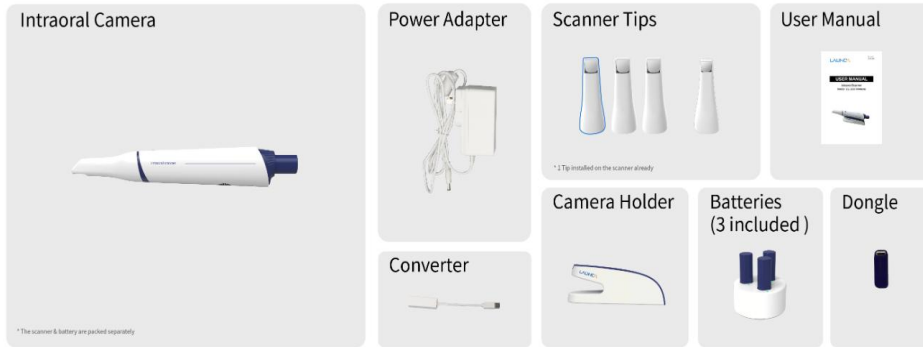
DL-300 Wireless is a calibration-free scanner designed to offer hassle-free scanning without the need for regular calibration adjustments. The scanner is ready whenever you need it while ensuring accurate and consistent performance.

## Remote Control

Enjoy a more hygienic workflow and convenient controls at your fingertips. The DL-300 wireless allows you to effortlessly check scan data by controlling the scanner itself. Rotate, zoom in, rescan, or switch between interfaces with a simple gesture without interrupting your flow or concentration.



## What's in the box



## Specification

General Information		Scanner Technology	
Intended use	Optical impression system used for dental restorations, implant and orthodontic appliances	Basic 3D imaging principle	Triangulation
Single arch scan time	30 seconds	Light projection	High density LED light dots
3D scanning mode	Video type	Machine vision	Binocular vision
Color scan	Realistic texture	Camera sensor	Dual camera
Quadrant accuracy	10 microns	Internal moving part	None
Full jaw accuracy	50 microns	Imaging stitching principle	3d image stitching
Ease of Scan		Ease of Grip	
Scan FOV(Field of View)	DL-300 Wireless: 15mm*17mm	Dimensions(L x W x H)	DL-300 Wireless: 283x36x34mm
Scan depth	-2mm - 18mm	Weight	DL-300 Wireless: 330g
Frame rate	DL-300 Wireless: 20fps	Tip size	DL-300 Wireless: 17x20mm (Standard) + 14.5x17mm (Mini)
3D image visualization	Real-time imaging display	PC connection	USB 3.0/3.1/3.2
Scan indication	Scan interruption sound indication Bite scan color and sound indication		
AI scan	real-time soft tissue removal real-time overlap removal		
Anti-fogging	active heating		
Functions		Scanning Experience	
Special scan modes	Denture scan/Impression scan/Prep scan	Scan path	Occlusal-Lingual - Buccal
Metal scan	Self-adaptative metal scan	Post-processing	Both before and after the buccal occlusal scan are fine
2D photo	HD photo	Bite scan	One-side scan /Smart color and sound indication
Data editing	Raw data trimming/Hole filling/Erase	Playback	Yes
Occlusion analysis	Bite color map/distance measurement	Rescan	Yes
Data analysis	Undercut/Margin line	Lower/Upper jaw exchange	Yes
Cloud platform	Yes		
Orthodontic Simulation	Yes		
Remote Control	Yes		
Scan Area Lock	Yes		
Digital Workflow		Maintenance	
Connection	Open	Warranty	24 months (standard)

<b>Data format</b>	STL / PLY/ OBJ	<b>Annual fee</b>	Free of charge
<b>Data transfer</b>	Email / Cloud	<b>Software update</b>	Free of charge
<b>CAD intergration</b>	External CAD	<b>Sterilization</b>	Autoclavable tip 80 times
<b>Patient data management</b>	Launca scan software	<b>User calibration</b>	Free of calibration
<b>Wireless Features</b>			
<b>Battery life per unit after fully charged</b>	1 Hour		
<b>Input power</b>	12/3A (charging by handpiece holder)		
<b>Charging method</b>	charged by handpiece holder or by charging compartment		
<b>Wireless Technology</b>	Wifi6 5G		

### PC Configuration Requirements

<b>CPU</b>	Intel Core i7/i9 (10th/ 11th generation) with base frequency of 3.0GHz or above AMD R7 5800H or above	The 13th generation intel core cpu i7/i9 models 13XXX are the newest ones. Not compatible to Apple CPU.
	NVIDIA GeForce RTX 2060/2070/2080 NVIDIA GeForce RTX 3060/3070/3080	Not compatible to AMD GPU
<b>RAM</b>	16 GB RAM or above	
<b>Monitor</b>	Monitor with HD resolution of 1920 x 1080	
<b>Operating system</b>	Windows 10	Not compatible to Apple IMAC operating system
<b>USB Port</b>	USB 3.0/3.1/3.2 (at least 2)	
<b>Storage</b>	512 GB/ 1 TB	1 TB hard disk storage for data is recommended